



IWA PIPELINE



SUMMER

© 1990 THE ISLAND WATER ASSOCIATION, INC.

VOLUME 13 ISSUE 3

IWA KEEPS CITY "IN THE KNOW"

On June 19, IWA gave a presentation before Sanibel's City Council regarding the present condition of the islands' water supply and plans for the future.

First, there was the good news. IWA water is a very high quality product. The Council was shown results of latest tests for regulated contaminants in IWA water. In no case did any contaminant exceed 62% of the maximum allowed by state and/or federal agencies. Indeed, the great majority of tests were marked BDL (Below Detection Level). Unlike water suppliers in other areas we have not had to deal with any contamination from pesticides, fertilizers or other chemicals.

Then there was the pretty good news. The South Florida Water Management District has renewed IWA's permit to take water from the aquifers, but it did not raise the amount as much as IWA was asking. The old permit had allowed IWA to withdraw 1.24 billion gallons per year. IWA asked for a sliding-scale increase over five years to 1.885 billion gallons; the new permit sets a fixed rate of 1.582 for five years. It will take a lot of conservation to meet this goal.

IWA also discussed the need for a second major power line to the Island, asking the City to once again inform the Lee County Electric Co-op of their concern. Without electrical power we can meet normal water supply demand for about 3 to 5 days from our storage tanks, but we could not produce any new water. A second major power line would improve the

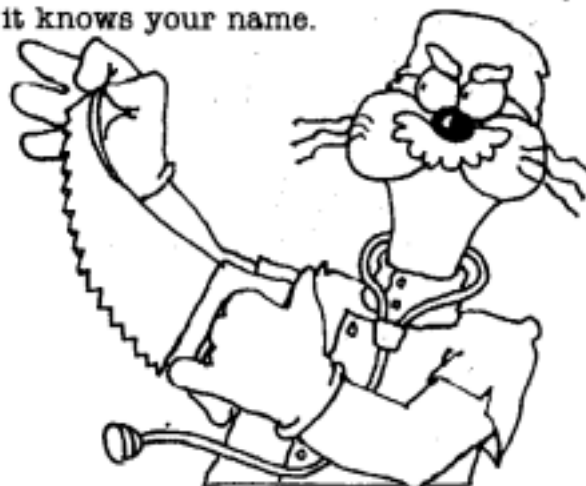
chances of the Islands having adequate water after a major storm (IWA personnel were surprised to discover during their Charleston-area visit that after Hurricane Hugo passed through, the local water usage rose significantly because of leaking pipes and water being used for clean-up operations).

IWA BRAIN TRANSPLANT

IWA is installing a new data processing system this summer. Its centerpiece is a new IBM model AS/400 computer which adds capacity, speed and versatility to our management and accounting tasks.

One of the jobs the new system can do is to allow automatic water bill payments directly from your bank account like the local electric co-op and telephone company are doing with their bills. IWA will contact you later with information about this new option.

Another thing it will do is change your account number, but don't worry... it knows your name.



IS CONSERVATION WORKING?...

Our computer thinks so. Every month it compares IWA's water production with rainfall and causeway traffic figures for the corresponding month to produce a model production trend. Comparing the 61-day period in May and June 1990 with the same period in the last 10 years shows an abrupt down-turn in actual production when compared to what this model predicts.

An optimistic guess would be that this reduction is caused at least partly because of the several water conservation projects done by the Sanibel-Captiva Conservation Foundation under its grant from IWA. Since last September, for example, SOCF personnel have spent hundreds of hours teaching Xeriscape to new home builders as well as some of the very high volume water users listed last year by IWA's analysis. This July the IWA Board authorized \$58,100 to fund a second one-year grant to let SOCF continue these water saving projects.

And, by the way, we think the reason the down-trend in water use is just now emerging is because almost all of the conservation work to date has been aimed at Island residents. Our seasonal visitors use lots of water and they haven't been approached yet. Now that many have left us we find that those of us who live here are helping to save water.

We've received some good ideas from concerned IWA members about this problem and we're now planning an educational campaign aimed at tourists and winter visitors.



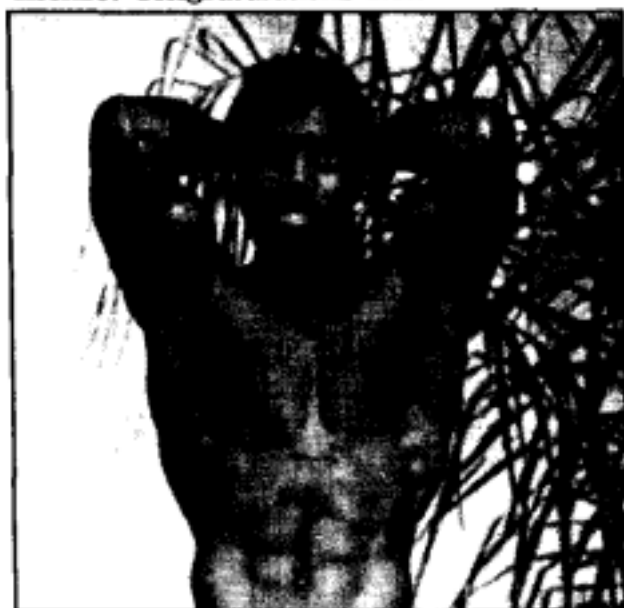
IT'S ALL DOWN HILL NOW

Our fire hydrant program is now in its final phase. There are just 172 homes or apartments left on the Islands which are more than 1,000 feet from a fire hydrant because of the lack of a big enough water main in their neighborhood. When the fire main extension program started eight years ago there were 672 units so situated.

The only problem is that putting in large mains to serve the final 172 units is going to cost a lot more than the previous 500. The average cost of extending the water main to allow installing the remaining hydrants is expected to be \$1,800 per dwelling unit, way up from the original \$200-\$300. The increase is due to the fact that the hydrants are going into some more remote areas of the Islands.

TYUS GETS LICENSE

Claude V. Tyus ("T.C.") has received his Florida State License as a Water Plant Operator. He's been a trainee with IWA for 18 months, and among his other accomplishments are two Mr. Southwest Florida titles in bodybuilding. Who was going to tell this guy he couldn't have a license? Congratulations T.C.!





1990 CAPITAL PROGRAM UPDATE

Good progress has been made, with recent milestones on several projects to report:

- Construction of the new water storage tank on Captiva is complete. Work is underway on the associated pumping equipment.
- The RO Plant is looking pretty spiffy these days. Its new masonry walls have been painted inside and out and a new roof has been installed. Installation of a new ceiling will complete its refurbishment.
- IWA has designed and built a new system using carbon dioxide for cleaning the wells supplying the RO Plant. Four wells have been cleaned to date. We have already saved enough money, compared to conventional acid cleaning methods, to pay for the entire system.

BEATING THE GRIM REAPER

More good news. In May the replacement membranes in three of our five "trains" (Reverse Osmosis Elements) passed their fifth birthday — the time when, according to the installer's warranty, they were supposed to have been worn out. We're happy* to report that all these old-timers still look and act very peppy and the experts think they should go at least 2½ years more before they fade away.

*All together they cost just under \$350,000. Now that's happy, folks!

DID YOU KNOW?

If you moved to the Islands from up north you might be surprised to know that our water comes out of the ground at a temperature above 80 degrees F. As a matter of fact, that's the temperature of the water in the aquifers 500-800 feet below the surface.

In some ways, that's a good thing. It is much easier and cheaper to remove salt from warm water, and, of course, it's cheaper to heat it up in your hot water heater.

Of course there are some disadvantages. It's impossible to take a cold shower and it uses up a lot of ice cubes.

SOMETHING FOR NOTHING

IWA still has SANIBEL-CAPTIVA WATER SAVER LICENSE PLATES. You can get yours by stopping by the office or send in the form below with your bill and we'll mail you one. Come on! It's free!



Yes, I would like to have a "We Save Water" License plate

NAME: _____

ADDRESS: _____ PHONE: _____

CITY: _____ STATE: _____ ZIP: _____

Mail this coupon to Island Water Association, Inc.,
P.O. Box 509, Sanibel, FL 33957.

THE ISLAND WATER ASSOCIATION, INC.
COMPARISON OF 1990 BUDGET TO ACTUAL RECEIPTS AND DISBURSEMENTS

		SIX MONTHS OF	
<u>RECEIPTS</u>	<u>1990 Budget</u>		<u>Actual Receipts</u>
Water Sales	2,100,388		\$1,895,528
Interest	37,500		37,443
Other Receipts	8,000		28,028
Connection Fees	70,000		56,754
TOTAL RECEIPTS	\$2,212,888		\$2,018,751
1/4 1990 Carryover	593,823		593,823
TOTAL FUNDS	\$2,806,711		\$2,609,574
		SIX MONTHS OF	
<u>DISBURSEMENTS</u>	<u>1990 Budget</u>		<u>Actual Disbursements</u>
Wages and Benefits	\$667,338		\$640,498
Professional Fees	42,756		54,882
Electricity	333,348		303,348
Telephone	7,002		7,898
O & M Service & Supply	325,560		233,303
Motor Fuels	6,798		6,000
Insurance	52,248		52,504
Postal Charges	6,000		5,960
Travel, Training, Conferences	11,852		9,852
Debt Repayments	128,661		65,520
Capital Expenditures	660,438		529,017
Contingency Fund	75,000		0
TOTAL DISBURSEMENTS	\$2,313,791		\$1,908,250
EXCESS OF FUNDS OVER DISBURSEMENTS FOR 1990			\$701,324
FOR CASH POSITION ADD REMAINING CARRYOVER (\$593,823)			\$1,295,146
LESS RESERVE REQUIREMENTS & CONTRACTUAL OBLIGATIONS			\$1,266,839
NET AVAILABLE FUNDS			\$28,307

These figures represent the unaudited accounts as of June 30, 1990


 Thomas A. Sharp
 President